



SEFRAM 7869

The ideal companion for Digital Terrestrial TV (DVB-T, DVB-T2/T2 Lite) Digital Cable (DVB-C/C2) and Digital Satellite (DVB-S/S2 and DVB-S2X (option)) Display HD TV programs and 4K TV programs*

Minimum autonomy 4h

■ Touch screen, compact, robust and easy to use

With a panoramic 7 inches touch screen, you have full benefit of the touch screen technology: intuitive access to functions, menus and measurements. The new rugged housing with protective bumpers is designed for extensive field use and protection of sensitive parts of the instrument

■ All digital measurements in DVB-T, DVB-T2/T2 Lite, DVB-C/C2, DVB-S, DVB-S2, and DVB-S2X (option)

The SEFRAM7869 provides all measurements in DVB-T, DVB-T2/T2 Lite, DVB-C/C2, DVB-S, DVB-S2, and DVB-S2X (option). For each digital standard, we provide all measurements, including error rate, the constellation diagram and echoes analysis.

■ All necessary functions and tools to save time

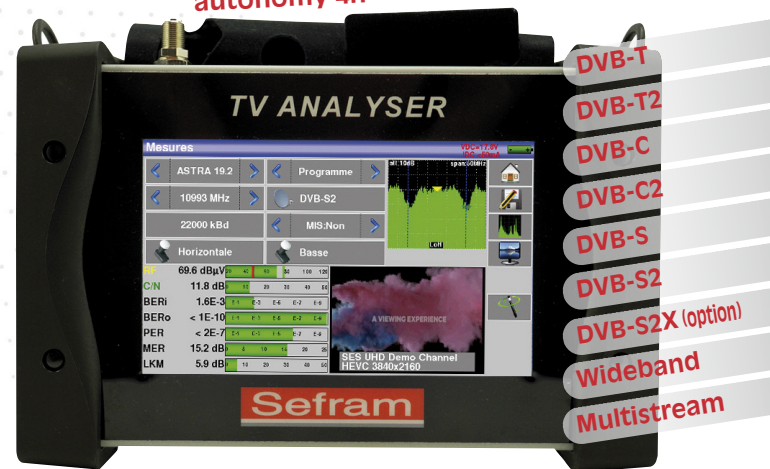
The SEFRAM7869 has a very simple and intuitive man-machine interface. Special functions have been added to save time and money.

■ Checking the alignment of antennas

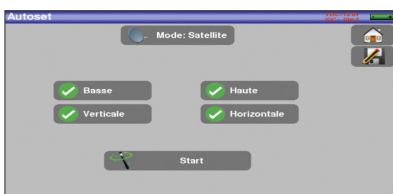
The SEFRAM7869 includes a checksat mode for satellite and a special tool to align terrestrial antennas. User will have a graphical information combined with a beeper.

■ USB Interface

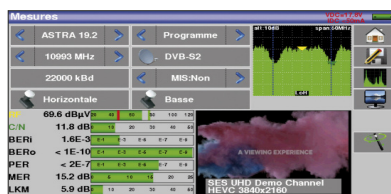
The SEFRAM7869 includes one USB interface for updating and getting the benefit of free firmware updates. The interface can be used to transfer measurements data, screens shots to a USB memory stick.



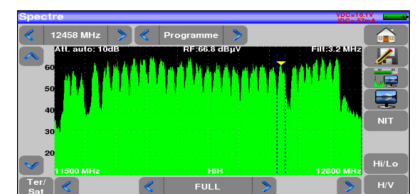
* Only for free-to-air



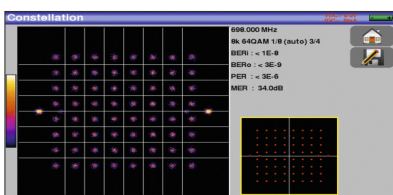
A performing autotest



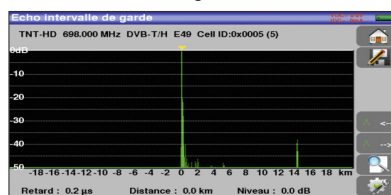
All measurements displayed on a single screen



Fast spectrum analysis



Constellation diagram



Echoes display with guard interval

freq.	std	RF	C/N	BER	BERo	PER	MER
E44	DVB-T/H	55.1	35.2	<5E-8	<1E-8	<1E-5	34.4
E58	DVB-T/H	59.0	38.7	<5E-8	<1E-8	<1E-5	33.9
E40	DVB-T/H	56.0	36.1	1.3E-6	<1E-8	<1E-5	33.8
E48	DVB-T/H	55.5	35.6	2.3E-7	<1E-8	<1E-5	33.8
E46	DVB-T/H	55.0	35.1	1.0E-6	<1E-8	<1E-5	33.4
10729 VL	DVB-S2	71.0	19.3	3.2E-3	<5E-8	<1E-5	14.4
10743 HL	DVB-S	70.6	30.4	5.1E-6	<1E-8	<2E-5	14.4

Measurement map



Follow us on:



Terrestrial and satellite TV meter

Specifications	Terrestrial band				Satellite band			
Frequency	5-1005 MHz				200 - 2400 MHz			
Range	measurement: 50kHz, display: 1kHz				measurement: 1 MHz, display: 1 MHz			
Resolution	-				C, Ku, Ku WIDEBAND (OL adjustable)			
Type LNB	-				-			
Level measurements	20 - 120 dBµV				20 - 120 dBµV			
Dynamic range	-				-			
Units	-				dBµV, dBmV, dBm			
Accuracy	-				± 2 dB ± 0.05 dB/°C			
Resolution	-				0,1 dB			
Measurement filters	32 KHz				160 KHz			
Standards	DVB-T / T2 / T2Lite, DVB-C / C2 BG, DK, I, L, MN, DAB, FM, carrier				DVB-S / S2 / S2X, DSS PAL, SECAM, NTSC, carrier			
Digital measurement	DVB-T	DVB-T2 / T2Lite	DVB-C (J83.A)	DVB-C2	DVB-S / DSS	DVB-S2	DVB-S2X	
Error rate	BERi (before Viterbi), BERo (before Reed-Solomon) PER (lost packets) MER LKM (Link Margin)	BERi (before LDPC) BERo (before BCH) PER (lost packets) MER LKM (Link Margin)	BER (before Reed Solomon BERo) UNC (paquets perdus PER) Noise margin	LDPC (BERi) BCH (BERo) FER (frame error PER) Noise margin	BERi (avant Viterbi), BERo (before Reed-Solomon) PER (lost packets) MER LKM (Link Margin)	BERi (before LDPC) BERo (before BCH) PER (lost packets) MER LKM (Link Margin)	BERi (before LDPC) BERo (before BCH) PER (lost packets) MER LKM (Link Margin)	
Modulation Error Rate (MER)	15 - 35dB	15 - 35dB	20 - 40dB	25 - 35dB	0 - 20dB	0 - 20dB	0 - 20dB	
Sensitivity	35 dBµV	35 dBµV	< 55 dBµV	< 55 dBµV	47 dBµV	47 dBµV	47 dBµV	
Bandwidth	6, 7 or 8 MHz	1,7, 5, 6, 7 or 8 MHz	-	6 MHz, 8 MHz	-	-	-	
Mode	-	-	-	PLP and data slice, simple or multiple	-	-	-	
Carrier	2k / 8k	1k, 2k, 4k, 8k, 16k, 32k + band extension	16 / 32 / 64 / 128 / 256 QAM	-	-	-	-	
Constellations	QPSK, 16 - 64 QAM	QPSK, 16 - 256 QAM	-	16 / 64 / 256 / 1024 / 4096 QAM	QPSK	QPSK, 8PSK, 16/32APSK	QPSK, 8PSK, 8/16/32APSK-L	
Rate	-	-	-	-	1 - 50 Ms/s	1 - 50 Ms/s	1 - 50 Ms/s	
Roll-off	-	-	-	-	0,20, 0,25, 0,35	0,20, 0,25, 0,35	0,05 - 0,35	
Guard interval	1/4, 1/8, 1/16, 1/32	1/4, 1/8, 1/16, 1/32, 19/128, 19/256	-	auto	-	-	-	
Viterbi	auto	auto	-	-	auto	auto	auto	
Spectrum inversion	auto	auto	auto	auto	auto	auto	auto	
HP/LP - PLP - Data Slice	HP/LP	PLP	-	PLP + Data Slice	-	-	-	
Multistream	-	-	-	-	-	stream selction 0 - 255 (ISI) PLS descrambling (Gold code)	stream selction 0 - 255 (ISI) PLS descrambling (Gold code)	
standards	EN 300-744	ETS 302-755	ETS 300-429	ETS 302-769	ETS 300-421	ETS 302 307 part 1	ETS 302 307 part 2	
Spectrum analysis	1 MHz to full span in 1, 2, 5 sequences							
Span	100 ms mini, 1000 ms max							
Sweep rate	-							
Filters	1.6 kHz, 3.2 kHz, 8 kHz, 16 kHz, 32 kHz, 80 kHz, 160 kHz, 320 kHz, 800 kHz, 1.6 MHz, 3.2 MHz							
Attenuator	automatic (0 to 55 dB, with 5 dB steps)							
Display	60 dB (10 dB/div)							
Antenna Check mode	fast antenna pointing, single or double LNB							
Settings	fast antenna pointing	-	-	-	fast antenna pointing, single or double LNB	-	-	
	10 places	-	-	-	30 satellites, with European database loaded	-	-	
	check 4 channels per place, can be modified by user	-	-	-	check 4 transponders per satellite, can be modified by user	-	-	
Remote supply and control	13 / 18 V, 500 mA max							
Tension	5 / 13 / 18 / 24 V, 500 mA max				-			
DiSEqC	-	-	-	-	DiSEqC 2.1, dish rotor control, committed & uncommitted switches			
DCSS	-	-	-	-	protocol extension DiSEqC SATCR, EN 50494, 8 slots max SCD2, EN 50607, 32 slots max			
TV picture and sounds	MPEG-1, MPEG-2, AAC, HE AAC, Dolby® Digital, Dolby® Digital Plus							
Sounds	SDT, LCN							
Tables de services	MPEG-2 SD and MPEG4 HD (HD H264) and HEVC, 4K HDR (H.265)							
Video	-							
RF input	75 Ohms, (F-F and BNC/F adaptator supplied)							
Input	50 V DC, 33Veff / 50 Hz max							
Max permissible voltage	-							
Analog video input	jack 3,5 mm, 4 contacts							
Connector	video 1Vpp max / audio 10 kOhms							
Voltage	PAL, SECAM, NTSC							
Standards	-							
Aux input/output	USB A, Ethernet 10/100 baseT							
Interface	15 V / 5 A with jack 5.5 mm							
Remote supply	-							
General specifications	LCD TFT color, 7 inches, 16/9, backlight (500 cd/m2), resolution 800 x 480, capacitive touch screen							
Display	main adapter 110/230 VAC, 15V DC / 5 A, jack 5,5 mm diameter							
Power supply	Lithium-Ion 93 W							
Battery (non removable)	terrestrial : 6H / satellite : 4H (according to use)							
Autonomy	9H for 80% / 10H for 100%							
Charging time	-5°C to 40°C							
Operating temperature	-10°C to 60°C							
Storage temperature	NF-EN 61326-1 / NF-EN 61326-2 / NF-EN 61010-1							
EMC and safety	250 x 165 x 65 mm							
Dimensions	1,35kg							
Weight	1 year							
warranty	-							

Supplied with : main charging adapter (90-245 V with European plug), F-F adapter, transportation pouch. The instruction manual is available directly on our website www.sefram.com



Follow us on :



Visit our website: www.sefram.com

Terrestrial and satellite TV meter

■ Accessories



Sun protector+rain protector+belt clip - P/N: 978489000



Rain protector - P/N: 978489500



Carrying bag (supplied in standard) - P/N: 978481000



Hard carrying case - P/N: 978483000



Charging adapter (supplied in standard) - P/N: 978553000



Car cigar lighter adapter - P/N: 978361000

For assistance and ordering



32, rue Edouard Martel - BP55- 42009 - St Etienne - cedex 2
Tél. +33 (0) 4.77.59.01.01 / Fax. +33 (0) 4.77.57.23.23
Web : www.sefram.com - e-mail : sales@sefram.com



FT7869 A 00 - Specifications can be updated without notice



Follow us on :



Visit our website: www.sefram.com